



Innovative practices by forest department

Sahibganj forest division

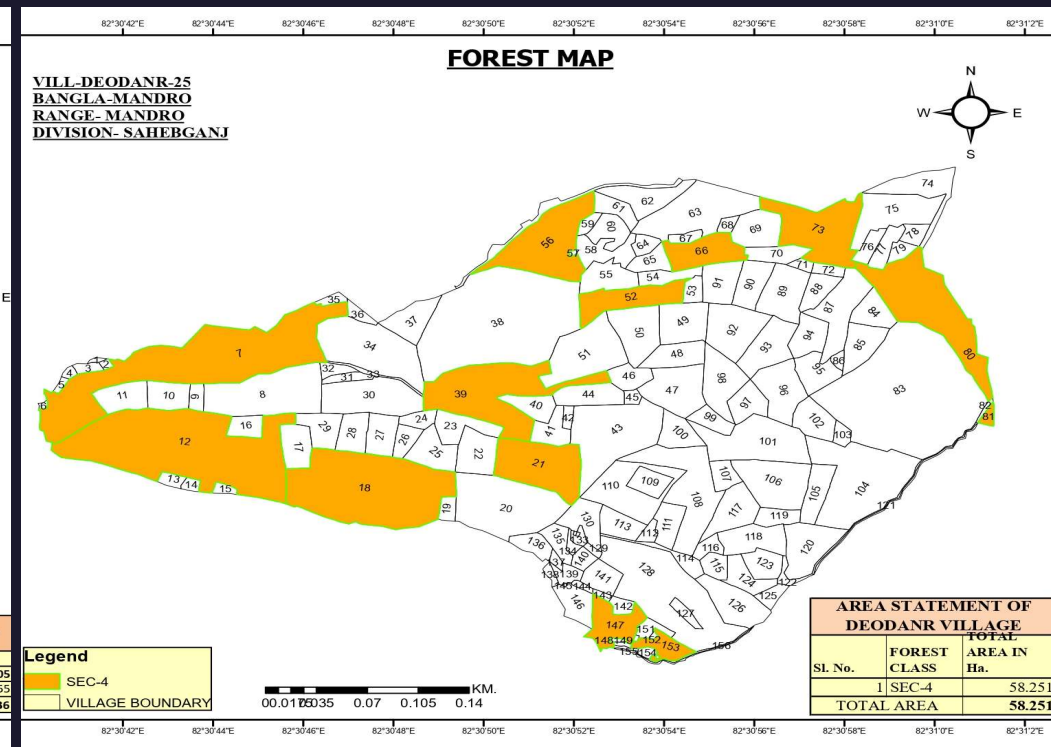
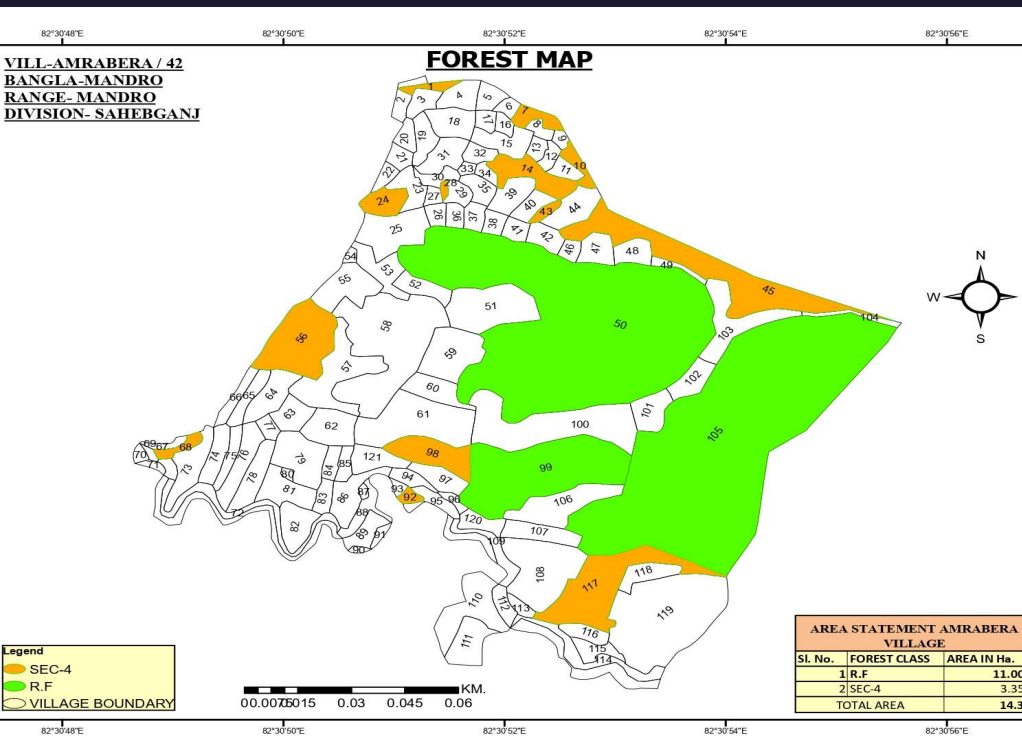


INNOVATIVE PRACTICES IN ILLEGAL MINING MONITORING ADOPTED BY SAHIBGANJ FOREST DIVISION



Introduction

- The GIS based technology has effectively been applied in daily working of division and .Satellite imagery and other technological advancement is being utilized to keep an eye on activities in forest areas.



Maps clearly demarcating forest land and non forest land have been prepared and distributed to each field functionary .



The KML files for all mining sites has been prepared this helps in monitoring the area being mined and prevents illegal encroachment of forest land by people involved in mining activities.



The satellite imagery is analyzed at division level and regularly monitored especially around mining zones to keep an eye on any illegal mining activity/encroachment. Any illegal activity if noticed is communicated to the concerned field functionary for instant action.

Sahibganj forest division

Topic two

Fossil park at Mandro

- Map
- Auditorium
- Interpretation center
- Water-conservation measures.



❖ Rishi kutir and forest rest house



Trail pathway & e-rickshaw



Sahibganj forest division



Rest house

Interpretation Centre Cum Museum





Auditorium



Glimpse of works done in fossil park project



ENTRANCE GATE



Arrival podium



Boundary wall with wire mesh



In-situ fossil sheds



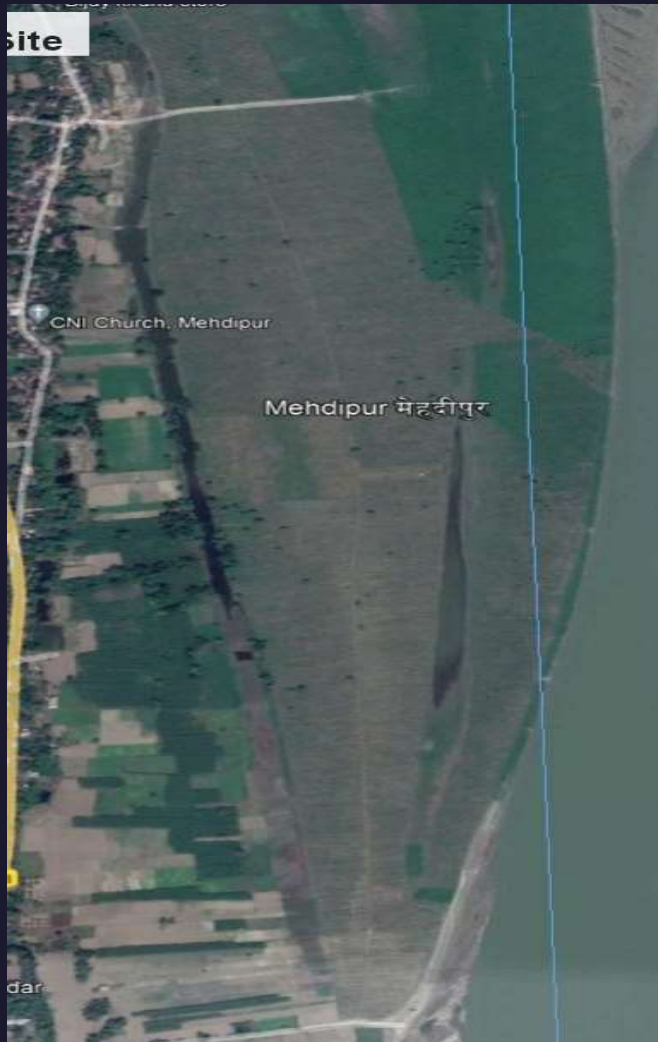
Soil and Moisture Conservation work at Mandro





Topic three

Plantation under Namami Gange



2017 google earth image of site before plantation



Current status of plantation site on google earth

The Plantation site under Namami Gange at Mehndipur has been designated the best plantation site in India under namami gange scheme by IIFM.

SAHIBGANJ FOREST DIVISION,
SAHIBGANJ



Plantation site current status



Wildlife at plantation site

Topic four

Efforts for wildlife conservation and
boosting Eco-Tourism.



Bird census 2022 had been organised at Udhwa lake bird sanctuary and 2313 birds of 53 different species have been spotted.



Jalaj Safari boat at udhwa



Motor boats for patrolling and Eco-tourists



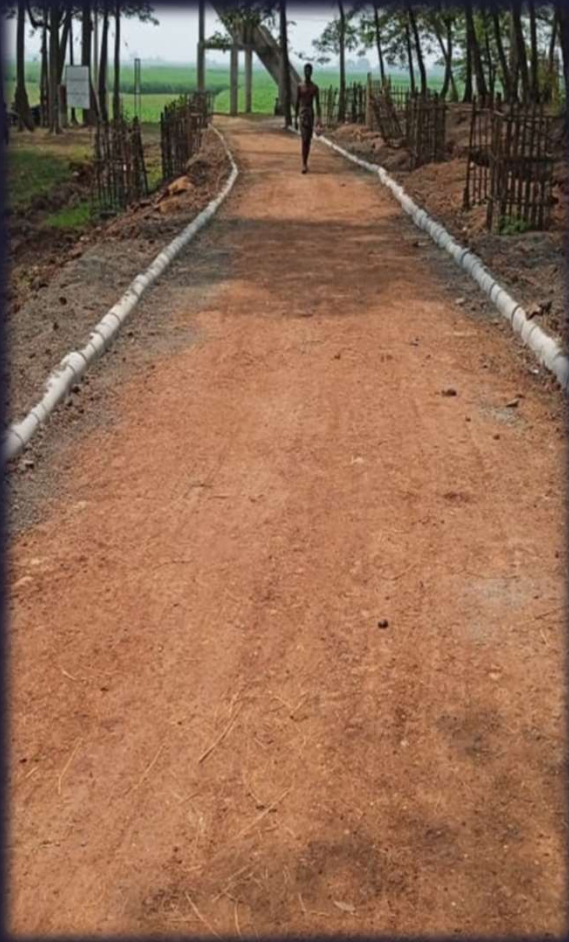
Peddle Boat service has been inaugurated at Udhwa lake Bird sanctuary on 5th June .



The Existing rest House at Udhwa has been repainted and informative signage's have been installed.

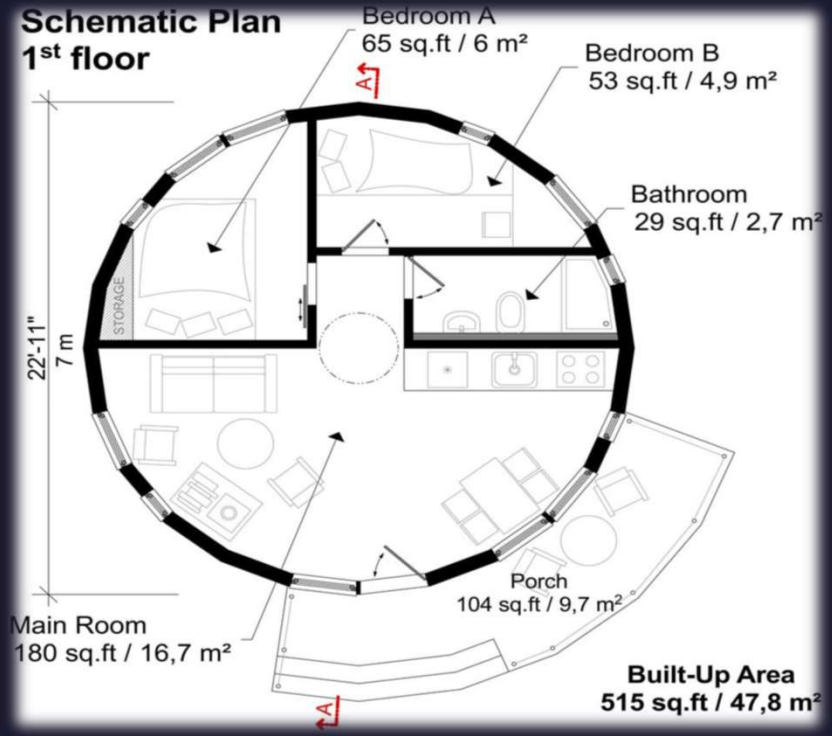


Trekkers have been supplied with walkie talkies and binoculars for patrolling in sanctuary area



Inspection
pathway cum
Cycling track has
been constructed
by tourism
Department to
promote Eco-
tourism.





Three Van-kutirs are under construction to provide accommodation for Eco-tourists

Thank You

Divisional Forest office Sahibganj

